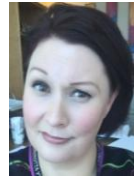


Step Up AZ 2016 Courts



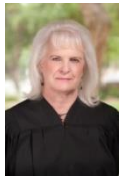
(Moderator) **Ed Gilligan Deputy County Administrator in Cochise County** spent 16 years working in the Arizona Superior Courts, holding positions of Chief Adult Probation Officer and Juvenile Court Services Director in Cochise County and, Treatment Program Coordinator, Unit Supervisor, Drug Court Coordinator, and Probation Officer in Pima County. He holds a Bachelor of Arts degree in Psychology from the University of Arizona and a Master of Science degree in Management from the American College.



Kate Lawson Pima County Attorney's Office specializes in the intersection of behavioral health and criminal justice, with experience in both the legal and behavioral health field. She has a Master's degree in Public Administration from the University of Arizona, Eller College of Business, with an emphasis in criminal justice. Kate is currently the Program Director of the Drug Treatment Alternative to Prison (DTAP) program with the Pima County Attorney's Office's under the direction of County Attorney, Barbara LaWall. Only the second program of its kind in the country, the DTAP program takes high-risk, high-need substance addicted individuals with prison-mandatory felony charges and instead sends them to residential treatment, provides wrap-around services like housing and job support, and intensive supervision. The program has had a consistent success rate of 70% throughout its five years of operation.



Steven Leifman, Associate Administrative Judge of the Miami-Dade County Court - Criminal Division in Florida has been named the National Center for State Courts' recipient of the William H. Rehnquist Award for Judicial Excellence. Judge Leifman was recognized in 2015 for his groundbreaking work helping people with mental illnesses who are either in the criminal justice system or at-risk of incarceration. One of the nation's highest judicial honors, the Rehnquist Award is presented annually to a state court judge who exemplifies judicial excellence, integrity, fairness, and professional ethics. Judge Leifman has stated that there is clearly something wrong with a society that is willing to spend more to incarcerate people with mental illness than to treat them.



Elizabeth R. Finn, Presiding Judge for Glendale City Court is the longest sitting judge in Arizona having served 37 years. Current activities include: Chair, Glendale Domestic Violence Task Force, Past Chair and current House of Delegates representative for the American Bar Association National Conference of Specialized Court Judges, member of the Supreme Court Commission on Victims and the Courts as well as the Limited Jurisdiction Committee. Awards include 2002, YWCA Outstanding Woman of the Year in the Public Sector and 2011, named Citizen of the Year by the Arizona Chapter of National Association of Social Workers, 2013 named by State Bar for Judicial Excellence and awarded the Lifetime Achievement Award by Arizona Coalition for Domestic Violence, awarded Lifetime Achievement Award from the Arizona Coalition to End Sexual and Domestic Violence and 2015, inducted into the Maricopa County Bar Hall of Fame. Judge Finn has implemented many specialized courts in Glendale including Domestic Violence Treatment Court, Domestic Violence Supervised Probation Court, DUI Review Court and Mental Health Court.



Dr. Aaron Bowen PsyD completed his Doctor of Psychology with a Forensic Certification. Dr. Bowen has worked and trained in several correctional facilities in Chicago, IL and Phoenix, AZ. He also worked for and managed the SMI Determinations Unit at Magellan Health Services and served as Director of Clinical Analytics, Outcomes and Integration. Dr. Bowen provided services and consultation for the AZDBHS, the RBHAs and the Social Security Administration. He has conducted approximately 2,500 psychological evaluations for Social Security Disability. Dr. Bowen currently serves as the Chief Executive Officer (CEO) of the Arizona State Hospital and the Deputy Director of the Arizona Department of Health Services.



Cindy A. Schwartz currently serves as the Project Director of the Eleventh Judicial Circuit of Florida Criminal Mental Health Project- Jail Diversion Program. Her career goals have been focused on promoting system transformation, community integration and recovery. Cindy has a master's degree in Rehabilitation Counseling from the State University of New York at Buffalo and her MBA from Nova Southeastern University. She is a certified Mental Health First Aid Instructor, an Advanced WRAP (Wellness Recovery Action Plan) facilitator, Trauma Informed Care Instructor, Consultant and Trainer for the SAMHSA National Center for Trauma Informed Care and Consultant/Trainer for the SAMHSA SSI/SSDI Outreach, Access and Recovery Technical Assistance (SOAR TA) Center. Cindy is also actively involved in her community and serves on a variety of professional organizations, boards and committees.

Step Up AZ 2016 Courts

COURTS

Objective: Bringing awareness and implementation of the National Stepping Up Initiative to all of Arizona's 15 counties and tribal regions and integrating the Stepping Up modules into county practices.

1. Is Our Leadership Committed?
2. Do We Conduct Timely Screening and Assessments?
3. Do We Have Baseline Data?
4. Have We Conducted a Comprehensive Process Analysis and Inventory of Services?
5. Have We Prioritized Policy, Practice, and Funding Improvements?
6. Do We Track Progress?

